



Your trusted partner in the journey to a sustainable tomorrow.

ISOMETRIX

ESG Reporting

In a significantly increasing trend, investors are seeking to invest in companies that consider the broader impact of their operations and are committed to sustainability. This tenet, Environmental, Social and Governance known as ESG, has been identified as a key focus for business in today's, and tomorrow's, ever-connected and transparent landscape.

ESG matters can develop into material risks. Managing ESG properly reduces risk, improves performance and profitability, and allows for better decision-making.

But how is this achieved amongst the myriad of sustainability frameworks that exist, and the continual requests from investors and stakeholders to report against a plethora of requirements?

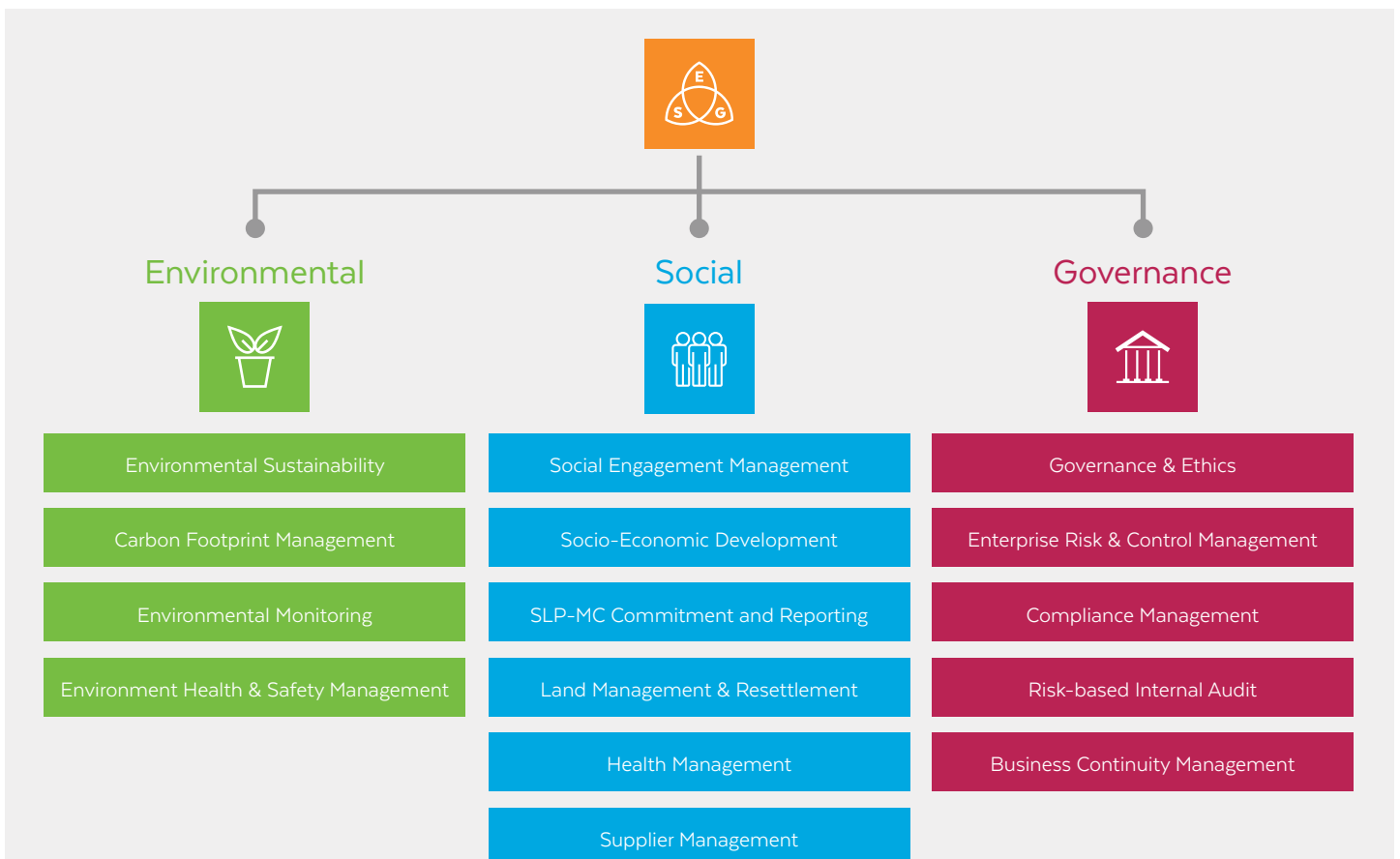
In today's technology and data-driven world, access to the information required to effectively understand risk and to produce ESG reports is readily available. What is needed is a single solution that allows organizations to centrally capture that information, efficiently connect it, and produce actionable insights and reports on ESG performance and risks, thereby creating long-term value.

Our Solution

Our centralized management system is purely agnostic and allows you to collect data, report on any ESG standard (or framework) and proactively manage your business risk. Sustainability leaders can manage their complete ESG reporting ecosystem including sustainability reports and non-financial data reports.

The solution is an ESG standards reporting tool with added ability to manage key risks, indicators and conditions which may materially affect a company's ESG profile, such as incidents and due diligence findings. It has been designed in consultation with ESG industry specialists and investor companies to address the specific challenges that businesses face.

At the core of the solution is an ESG standards reporting and KPI module to assess the degree of alignment the company has to any ESG standard, or to the KPIs a company would like to assess themselves against. The ESG solution can also be easily integrated into other IsoMetrix solutions to gather specific metrics to aid in the reporting.



Key features of the IsoMetrix ESG solution

- Standard dashboards present data in a variety of graphs and tables to assist in managing and reporting on ESG standards and risks
- Configurable set-up to specific organizational needs
- Alignment to whichever ESG-related standard an organization would like to assess themselves against, or an investor would like to rate a company against
- Integrated solution which allows linking with other IsoMetrix solutions

- Report on ESG standards and view real-time analytics in comprehensive dashboards
- Tailor the system to meet the unique needs of your organization
- Apply at an operational level with the ability to aggregate data into a corporate view
- Easily integrate with other IsoMetrix solutions, such as Environmental Sustainability, Social Sustainability, Carbon Footprint Management, Audits and Inspections and Social Sustainability to gather specific metrics to report against

Benefits

The IsoMetrix ESG solution provides companies with a management system that defines and manages all ESG initiatives.

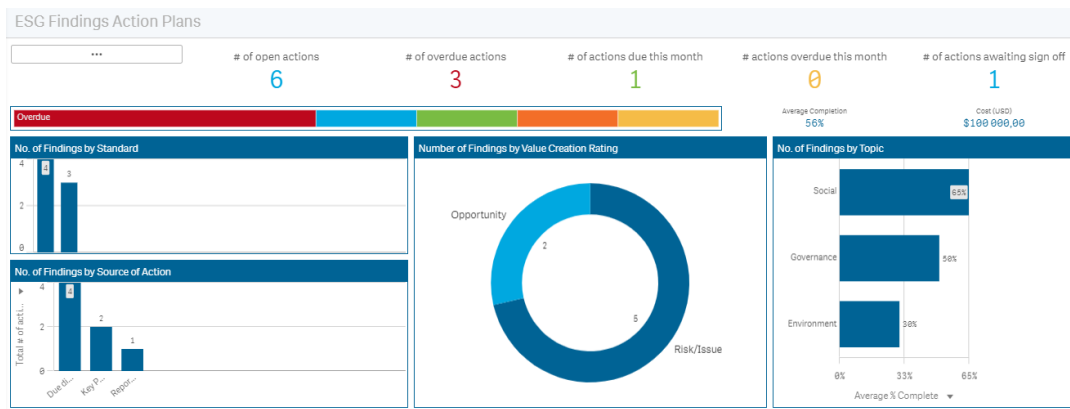
- Eliminate the time-consuming task of collecting data from decentralized business units
- Track and close out ESG-related findings and drive ESG initiatives through action plans
- Provide a complete and transparent view of an organization's ESG performance including managing ESG-related risks, incidents and grievances

Powerful Interactive Dashboards

A key component to the success of the IsoMetrix ESG solution lies in the interactive, highly visual dashboards. The dashboard suite dynamically presents real-time data from across all modules of the solution.

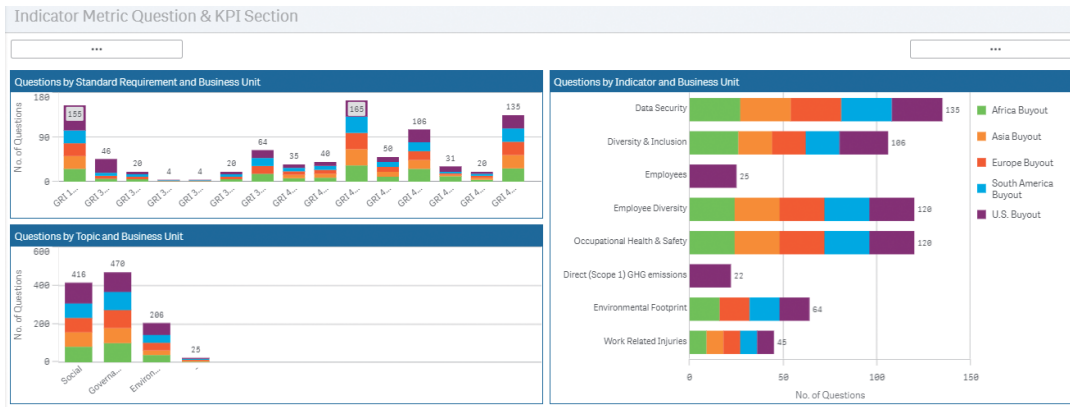
Managers can track and view performance and filter until the desired information is displayed. Dashboards are customizable, enabling an organization to control what data is visible and what data is specifically displayed according to user profile.

Management pack templates can be easily created to reduce the overhead of the reporting cycle.



“the system is purely agnostic and allows you to collect data, report on any ESG standard or framework.”

ESG Findings



ESG Question Analysis

✉ If you have any questions about IsoMetrix or our solutions, please contact the sales team at info@isometrix.com

[isometrix.com](https://www.isometrix.com)