

# ISO▲ETRIX

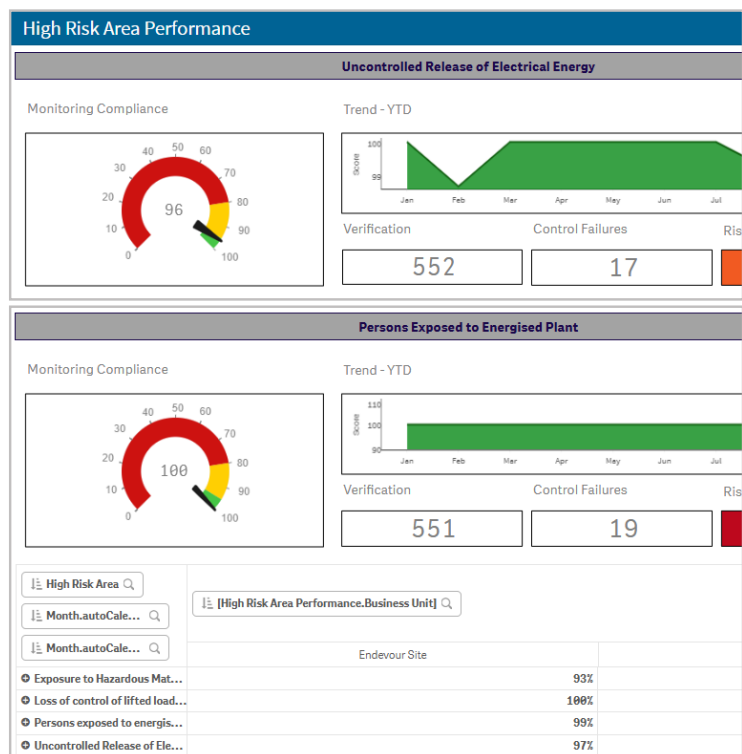
## Safety Management Software for High-Risk Industries

Proactive Risk Management  
to Keep Everyone Safe Every Day

# The Vision —Zero Harm Starts Here

Many of today's high-risk organizations embrace a Zero Harm or Journey to Zero safety culture mantra, aiming to ensure every person goes home safely every day.

Achieving this vision requires more than good intentions or manual processes — it requires an integrated Safety Management System (SMS) that drives implementation from leadership to the frontline.



High-Risk Area Performance Dashboard

**Effective safety management software empowers organizations to remove hazards, mitigate risks, and embed safety into operational DNA**—supporting compliance with ISO 45001 and related standards while delivering measurable improvements in workplace safety and culture.

# Core Safety Management Capabilities

## Risk and Control Management



Identify and assess workplace hazards across all environments using dynamic risk matrices and control verification workflows.

Continuously monitor controls to ensure effectiveness and compliance, enabling real-time risk mitigation.

## Incident Management



Capture incidents, near misses, environmental releases, and hazards.

Manage thorough investigations, root cause analysis, and assign corrective and preventive actions (CAPA) through automated workflows.

## Observations and Inspections



Schedule, conduct and record workplace inspections and planned/unplanned observations.

Utilize configurable digital checklists with photo capture, offline data collection, and immediate feedback loops.

## Compliance Management and Audits



Manage and track compliance obligations with automated calendars and audit scheduling.

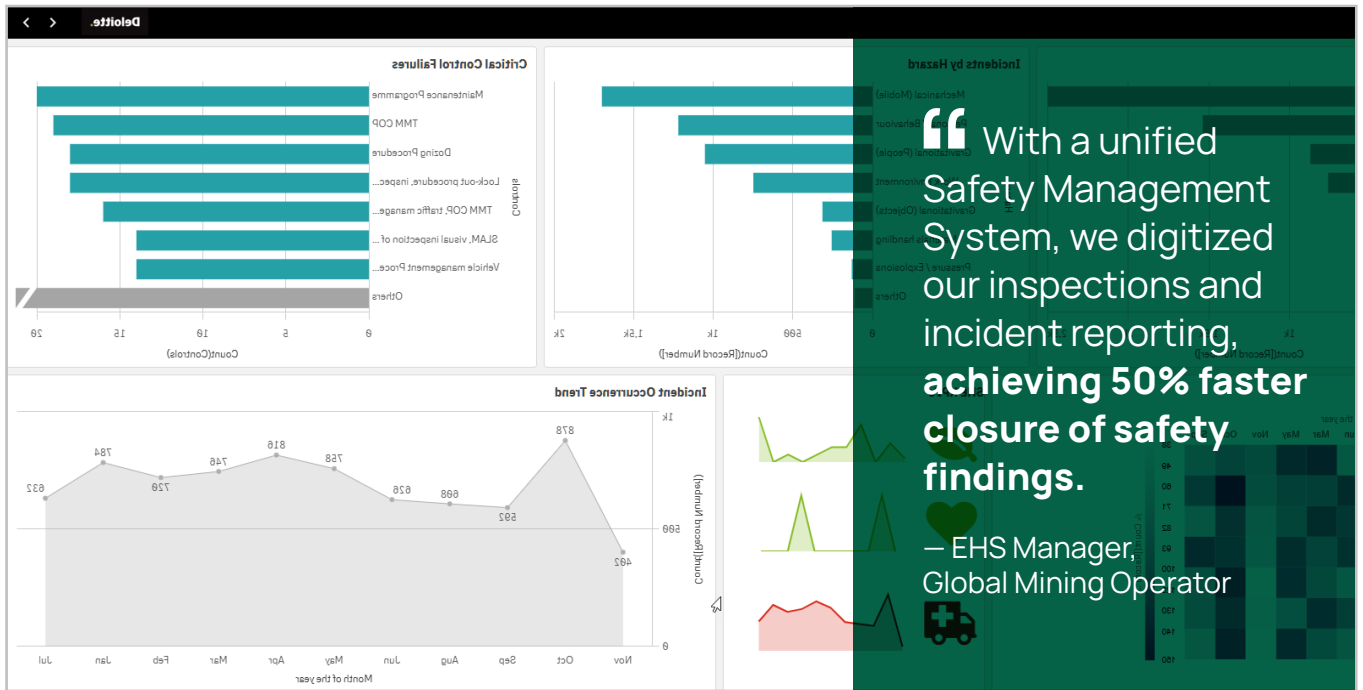
Centralize regulatory documentation and audit findings to simplify preparedness and demonstrate compliance.

## Control of Work



Assign and control high-risk tasks with permit-to-work systems, hot work permits, confined space entries, ensuring only authorized personnel perform designated jobs under controlled conditions.

# Safety Assurance and Continuous Improvement



Incident Analysis Dashboard

01

Leverage real-time dashboards and analytics to monitor trends, track corrective actions, and benchmark safety performance across sites and contractors.

02

Employ behavior-based safety observations and Visible Felt Leadership (VFL) tools to drive frontline engagement and accountability.

03

Generate audit-ready reports and compliance evidence to satisfy regulators, insurers, and executive leadership.

Modern safety software integrates human behavior insights with objective data, shifting from reactive to predictive safety management.



# Benefits for Decision Makers

## Reduce Incidents and Lost Time:

Proactively identify hazards and incomplete controls to prevent accidents before they happen.



## Enable Leadership Accountability:

Clear visibility into safety performance for management that drives action and cultural change.



## Simplify Compliance and Reporting:

Automate regulatory tracking, inspections, and corrective action workflows to reduce administrative burden.



## Improve Workforce Engagement:

Equip field teams with mobile tools for real-time hazard identification, observations, and safety communication.



## Drive Data-Driven Improvements:

Use analytics and AI insights to prioritize risk controls and continuously enhance safety culture.



“Combining real-time risk assessment with permit-to-work control helped us reduce high-risk task accidents by 30% in 12 months.”

— Safety Director,  
Large Energy Company



# Next Steps – Empower Your Safety Journey



## Next Step

Request a  
personalized demo  
and risk assessment  
consultation



## Visit

[www.isometrix.com](http://www.isometrix.com)



## Contact

[info@isometrix.com](mailto:info@isometrix.com)

Atlanta · Toronto · Perth  
· Johannesburg · London  
· Santiago

**ISOMETRIX**