



GRC software that is
integrated, visible, actionable

ISO METRIX

Social Sustainability

When companies in extractive industries engage in business activities, they disrupt the social environment. It is essential that, from the outset, organizations understand who and what is going to be disrupted and how the company needs to mitigate the impact and add value to the social chain. Not managing this properly can threaten the organization's Social License to Operate.

Traditionally this is managed using a variety of standalone or spreadsheet-based systems. Such environments do not provide visibility into an organization's social sustainability profiles, compromising efficiency and increasing the risk of community dissatisfaction and litigation.

“Its agility is what makes IsoMetrix stand out against competitors. The social space is maturing quickly and software needs to be agile to stay aligned with latest thinking.”
Eddie Smyth, Director, Intersocial

Our solutions

The IsoMetrix Social Sustainability solution assists organizations to manage the social environment and drive operational performance improvement, effectively reducing risk and cost.

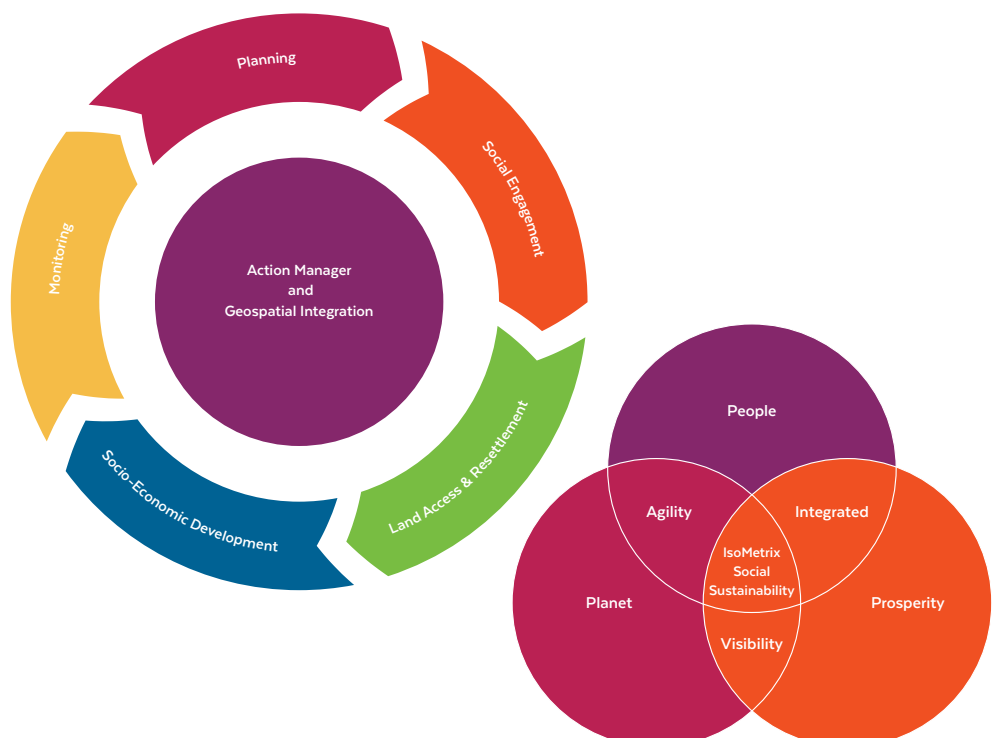
The software combines the different social sustainability processes in a dynamic, flexible and systematic way, thereby providing a single, comprehensive, integrated management solution.

The easy-to-use and intuitively designed interfaces facilitate the rapid adoption of a culture of participation to achieve corporate goals and objectives.

IsoMetrix helps organizations drive compliance with international management system standards and guidelines such as ISO 26000, Global Reporting Initiative (GRI), International Finance Corporation (IFC) and many more.

Benefits

- Automation of social sustainability management thereby increasing efficiency and reducing cost
- Standardization of social sustainability best practice processes throughout the organization and across multiple projects
- Understand impacts and how to mitigate them, and where to channel development efforts
- Visibility of progress against commitments on a real time basis and not from one annual report
- Reports such as the Stakeholder Profile, Obligations & Commitments and Stakeholder Interaction Plan at the press of a button
- Social sustainability teams spend less time writing reports and more time in the field and thinking strategically
- Easy integration with third party systems such as procurement data from ERP or stakeholder data from Excel spreadsheets
- Offline capabilities through dynamic Excel templates as well as IOS and Android apps
- Multi-language
- Automated notifications and reminders together with security based work process flow
- Visible performance monitoring and process optimization
- Increased data and information security
- Reduction in administrative burden and costs
- Full audit trail for each change to all records
- Visibility of information through powerful management dashboards
- Responsibility and accountability of tasks through the Central Action Manager
- IsoMetrix can grow and evolve over time as an organization's sustainability projects develop and mature



Key features

Planning

- Policies & Procedures
- Impact Assessment
- Key Performance Indicators (KPIs)

Social engagement

- Engagement Strategy
- Stakeholder Register
- Stakeholder Interaction
 - ▶ Stakeholder Engagement
 - ▶ Meeting Manager
- Stakeholder Outcomes
 - ▶ Obligations & Commitments Management
 - ▶ Complaints & Grievance Management

“With the introduction of IsoMetrix, an exciting world opened up. It felt like five people were added to our department because our processes’ ease and speed greatly improved. I truly cannot imagine implementing a management system without IsoMetrix.”

Hope Tyira, Business Area Leader:

Sustainable Development at Modikwa Platinum Mine

Socio-economic development

- Community Development
- Workforce Development
- Supplier Development

Land access & resettlement

- Land and Assets
- Entitlement and Commitments
- Compensation
- Livelihood Restoration

Monitoring

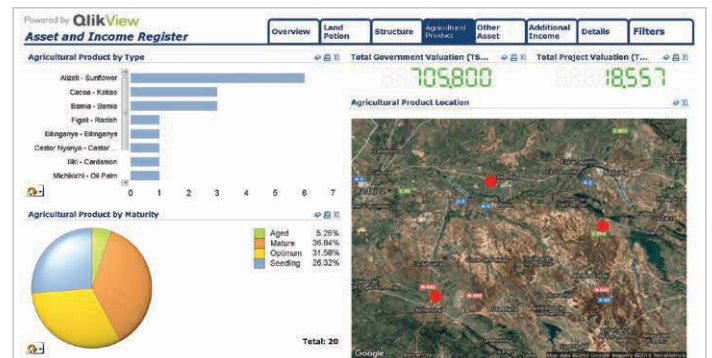
- Action manager
- Dashboards
- Geospatial integration

Why IsoMetrix?

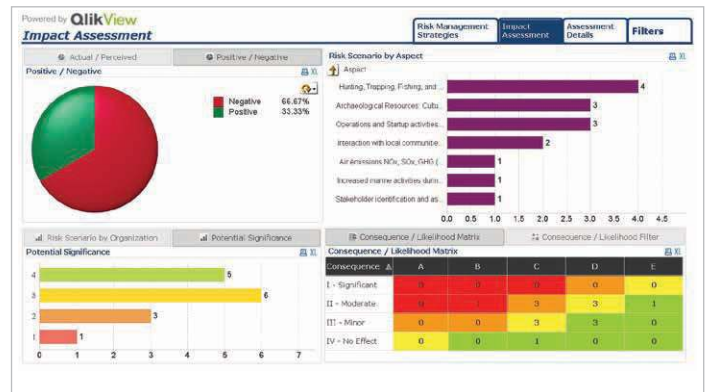
Agility. What makes IsoMetrix exceptional is that new modules can be created, or existing ones modified, without a single line of code being written. Because systems can be configured by people who are not developers, organizations can significantly reduce the cost and speed of the initial creation of, and enhancements to, the system. While every customer might have a custom solution, they all share the same source code.

Integration. The ease with which new modules can be created in IsoMetrix means that systems that are usually not integrated – islands of information such as standalone spreadsheets and databases – can be consolidated into a single system, with centralized administration and security. Integrating systems in this way drives organizational efficiency with multiple disciplines within GRC on a single platform.

Visibility. By integrating and centralizing disparate systems, management has visibility over information such as areas of risk, trends, overdue activities, and non-conformances. Greater visibility enables better decision-making. The QlikView dashboards built into IsoMetrix present immediate visibility around areas of concern such as overdue activities and non-conformances, as well as the analysis of trends and exceptions.



Asset and Income Register



Impact Assessment

ISOMETRIX

Good Business



www.isometrix.com

Our other solutions include: Business Continuity Management • Compliance • Contractor Management • Document Management • Environmental Sustainability • Enterprise Risk Management • Food Safety • Health, Safety & Environment • Land Access & Resettlement • Occupational Health • Occupational Hygiene • Performance Management • Primary Healthcare & Wellness • Process Compliance & Assurance • Quality • Social License to Operate and many more...

