



Your trusted partner in the journey to a sustainable tomorrow.

ISO METRIX

Occupational Health

Preventive health care in the workplace protects the health of employees and service providers, by monitoring employees' fitness for work, and implementing measures to avoid occupational accidents and illnesses.

Preventive health care programs ensure that:

- Employees are fit for and suited to, the work they are to do, and meet the essential health requirements for their relevant occupation
- Employees' health is not adversely affected by their work or working environment
- Baseline medical information on all employees is established, especially for those exposed to health hazards
- Making sure that employees' medical screening and examinations are up to date is a time-consuming exercise that is difficult to manage.

Our Solution

The IsoMetrix Occupational Health solution allows you to easily track medical trends, manage compliance and regulatory requirements, mitigate absences and make informed decisions on how to improve employee health and productivity.

Benefits

- Assist employees with injuries and illnesses that render them unable to return to their work with rehabilitation and workplace re-integration.
- Monitor employees' state of health on a regular basis as required (periodical examination) to detect occupational diseases at an early stage.
- Identify high-risk areas in need of intervention by analyzing medical surveillance data. Keep employees informed of the risks of their work (education) and the results of all medical examinations with regular interactions.
- Manage treatable medical conditions that may render employees temporarily unable to perform their work.
- Manage chronic illnesses that may have no bearing on employee fitness to work, but which threaten their personal long-term health.

Occupational Health

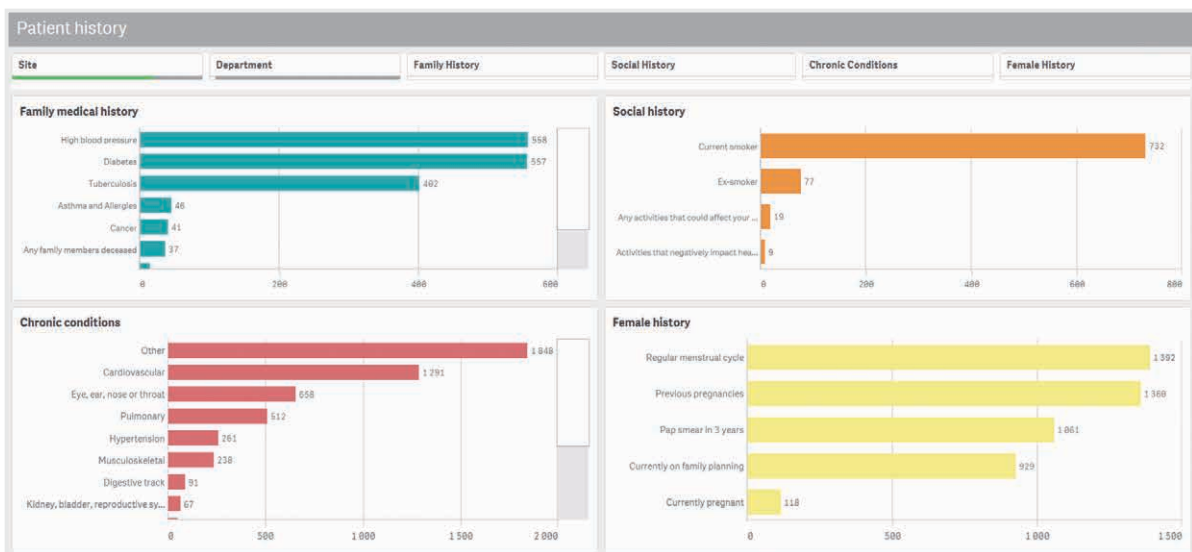
Medical Surveillance	Central Action Manager	Risk Management
Job Profile	Ad-Hoc Actions	Incident Management
Employee/Contractor Records	Central Findings Manager	Inspections Manager
Drug and Alcohol Test	Medical Surveillance Dashboards	Hazardous Chemical Register
Case Management	Occupational Health Dashboards	Communication Manager

Occupational Health Interface

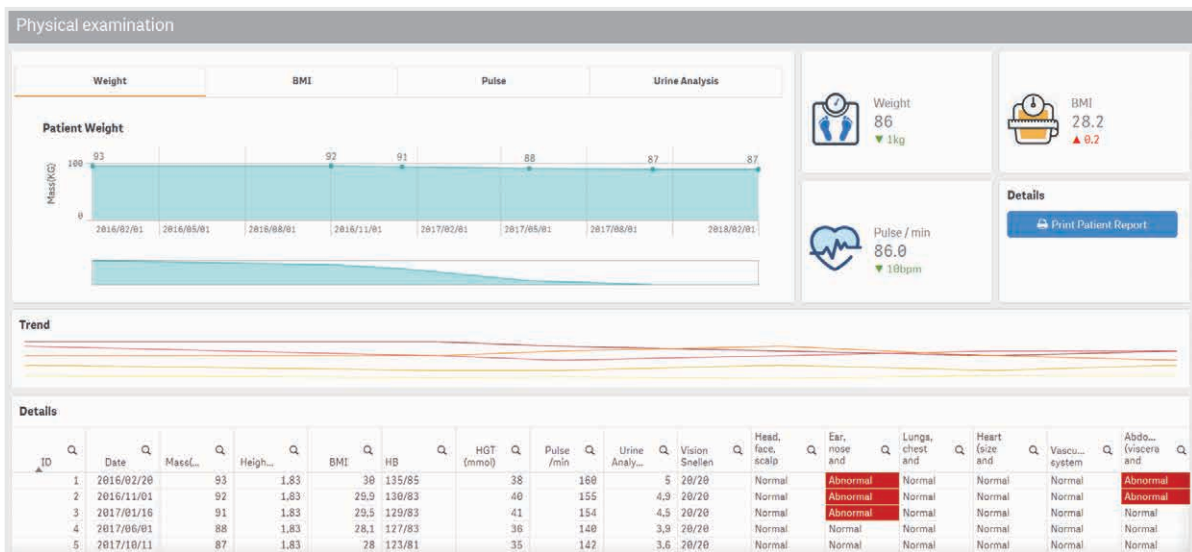
Key Features

- Chronic conditions and allergies are displayed on the first page of the Medical Profile, ensuring the attending medical practitioner is aware of these pre-existing conditions
- A diverse range of medical examinations and tests can be pre-selected for the patient's occupation. For example:
 - Urine analysis
 - Physical examination
 - Physical ability assessment
 - Audio screening
 - Spirometry
 - Radiography
 - Vision screening
 - Biological tests
 - Drug and alcohol tests

- Cover primary healthcare for both scheduled appointments and walk-ins. This includes chronic conditions, rehabilitation, wound care and pregnancy. Capture recurring scheduled visits in the system together with sick leave taken. Integrate, this information into third party Human Resources systems.
- Capture more details in the medical history for smokers, drinkers and drug users including consumption, quantities, dates started and ended.
- Conduct on-site testing at the clinic for alcohol and drug use and raise actions for management if the on-site testing returns positive results.
- Record Schedule 3 to 5 medication regardless of whether it is chronic medication or not.
- Record information about allergy medication and the length of time the patient has suffered from the allergy.
- Integrate with the IsoMetrix Occupational Hygiene to make a patient's entire exposure profile and history available to the health practitioner as part of the medical record. Any over exposures will be flagged, and conduct additional tests/medicals to assess the impact of the overexposure.



Patient History



Patient's Physical Examination

✉ If you have any questions about IsoMetrix or our solutions, please contact the sales team at sales@isometrix.com

isometrix.com