

Your trusted partner in the journey to a sustainable tomorrow.

**ISO METRIX**

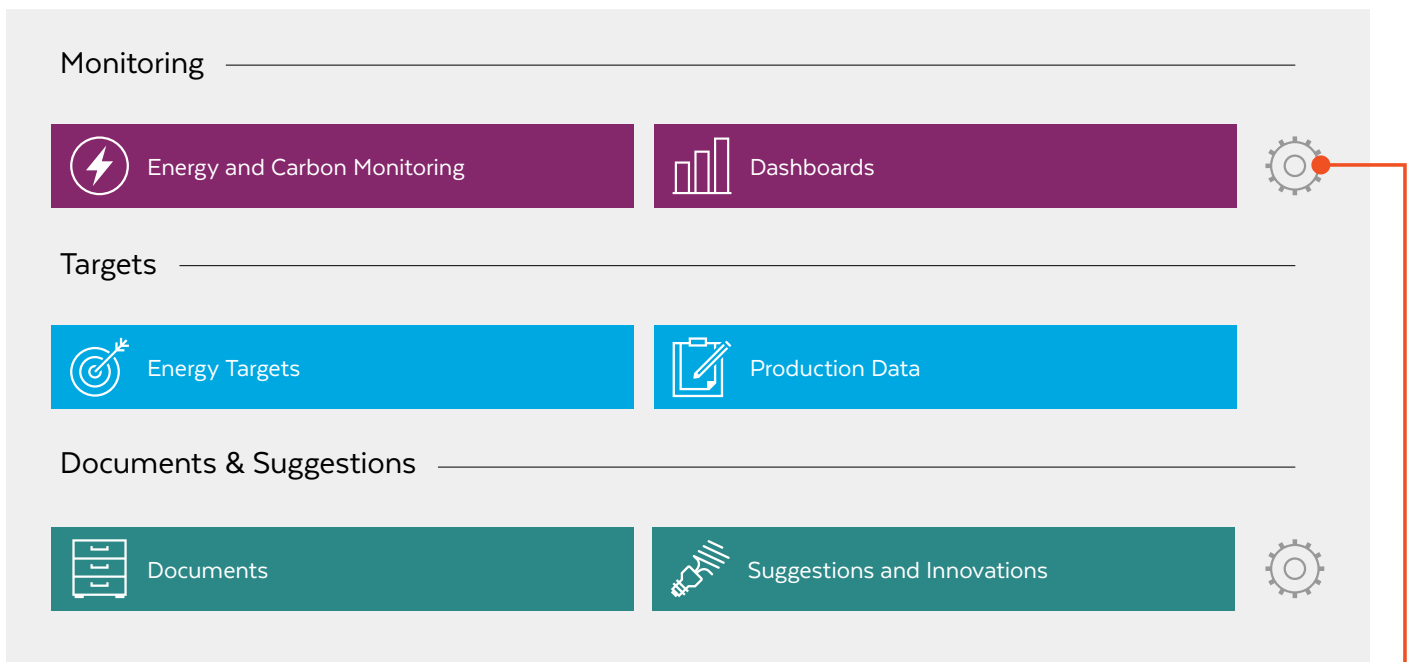
# Carbon Footprint Management

The repercussions of climate change are a reality and industry needs to be proactive and responsible by taking steps to reduce their greenhouse gas (GHG) emissions. In addition, there are either mandatory or voluntary reasons to calculate and report your carbon footprint, as well as carbon tax that is applicable in certain countries.

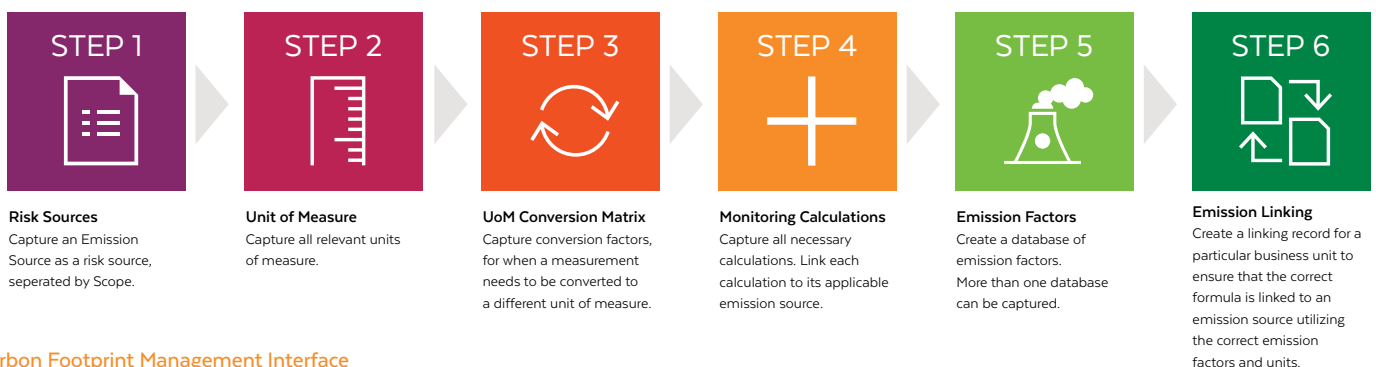
There is increasing public awareness of the potentially life-threatening repercussions if global average temperatures rise above acceptable thresholds. In

many cases, investors and stakeholders now seek to know how organizations are managing their GHGs and associated climate change risks.

Calculating and managing your carbon footprint is the first step in managing your GHG related risks. However, calculating a carbon footprint can become challenging when a variety of formulae, emission factors and units of measure need to be taken into consideration. There are also emission factor updates and forecasting that need to be considered.



## Energy & Carbon Monitoring Set-Up



## Benefits of measuring your carbon footprint:

- Identify carbon and energy sources
- Identify carbon and energy reduction opportunities
- Identify appropriate carbon-offset solutions
- Report to mandatory or voluntary guidance publications
- Communicate green credentials and intentions with shareholders, customers and staff
- Disclose emissions to your corporate customers who may already have a regulatory reporting requirement, both local and international
- Demonstrate environmental stewardship
- Voluntary adoption provides a first-mover advantage in non-regulated environments and improves market credibility

## Our solution

Futureproof your business with the IsoMetrix Carbon Footprint Management Solution. Our turnkey solution allows you to calculate, track, report and manage your carbon footprint.

Because of the software's agility, this solution meets the requirements of a variety of published guidelines and protocols and allows for the use of specific emission factors and formulae which can be updated when applicable. The transparency of the formula makes it easily auditable.

Energy targets can be set along with actions that can be tracked to completion, to ensure energy and carbon-related objectives are met. Intensity factors as a function of CO<sub>2</sub>e can also be set up.

## Features of the IsoMetrix Carbon Footprint Management Solution

- Calculate your Scope 1, 2 and 3 emissions across multiple sites in various jurisdictions

- Standard dashboards present the data in a variety of graphs and tables to assist in managing and reporting on GHGs. The ability to customize the dashboards ensure a company can view precisely what they need
- Flexible and transparent set up
- Integration allows linking with databases or other risk-management processes

## Advantages of the IsoMetrix Carbon Footprint Management Solution

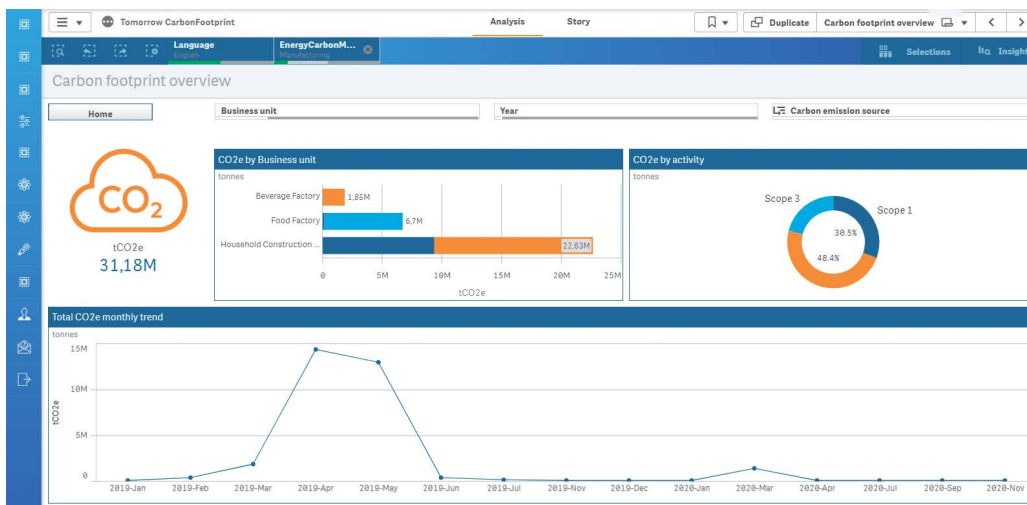
- Managers can get accurate information about their carbon footprint displayed in a range of formats, with the ability to drill down to the contributions of individual activities
- The design of the solution enables transparency of inputs such as emission factors, units and formula thus making for an easily auditable system which can be updated at any time. A history of changes is kept.
- Data generated from the solution makes for ease of reporting to local or international requirements or for corporate purposes
- A variety of targets can be set and alerts or notifications can be triggered when data does not conform

## Powerful dashboards

The real power of the IsoMetrix Carbon Footprint Management Solution lies in its built-in dashboard capabilities. Dashboards are customizable, you can control what data is visible and how it is displayed according to the user profile. Reporting is made easy through story boards and automation. Managers can quickly detect if certain data does not conform, as well as being notified immediately of a non-conformance or when any exceedance is triggered.



Total scope 1, 2 & 3 emissions stats by business unit



Carbon Footprint displayed by business unit, activity and trended

## Which companies are sensitive to GHG emission risks?

- Companies with fossil fuel-intensive operations
- Fuel-combustion for vehicles, generators, boilers, smelters, furnaces, etc.
- Companies with chemical processes
- Heavy electricity users
- Manufacturing companies such as cement, lime, glass, chemicals production, metallurgy, etc.
- Companies with fugitive emissions
- Mining, transportation of fuel (trucks, pipelines), landfill, etc

✉ If you have any questions about IsoMetrix or our solutions, please contact the sales team at [info@isometrix.com](mailto:info@isometrix.com)

[isometrix.com](https://www.isometrix.com)